

PROJECT TITLE:

Пътен участък 1

Приземна средногодишна концентрация на серни оксиди (SOx)  
Директива (ЕС) 2024/2881

COMMENTS:

R1 - 0.011  $\mu\text{g}/\text{m}^3$   
L1 - 0.012  $\mu\text{g}/\text{m}^3$   
R2 - 0.008  $\mu\text{g}/\text{m}^3$   
L2 - 0.009  $\mu\text{g}/\text{m}^3$   
R3 - 0.010  $\mu\text{g}/\text{m}^3$   
L3 - 0.005  $\mu\text{g}/\text{m}^3$

SOURCES:

8

RECEPTORS:

447

OUTPUT TYPE:

Concentration

MAX:

0.077  $\mu\text{g}/\text{m}^3$

COMPANY NAME:



LEGEND:

Tunnel  
Road

DATE:

03/14/2026

SCALE:

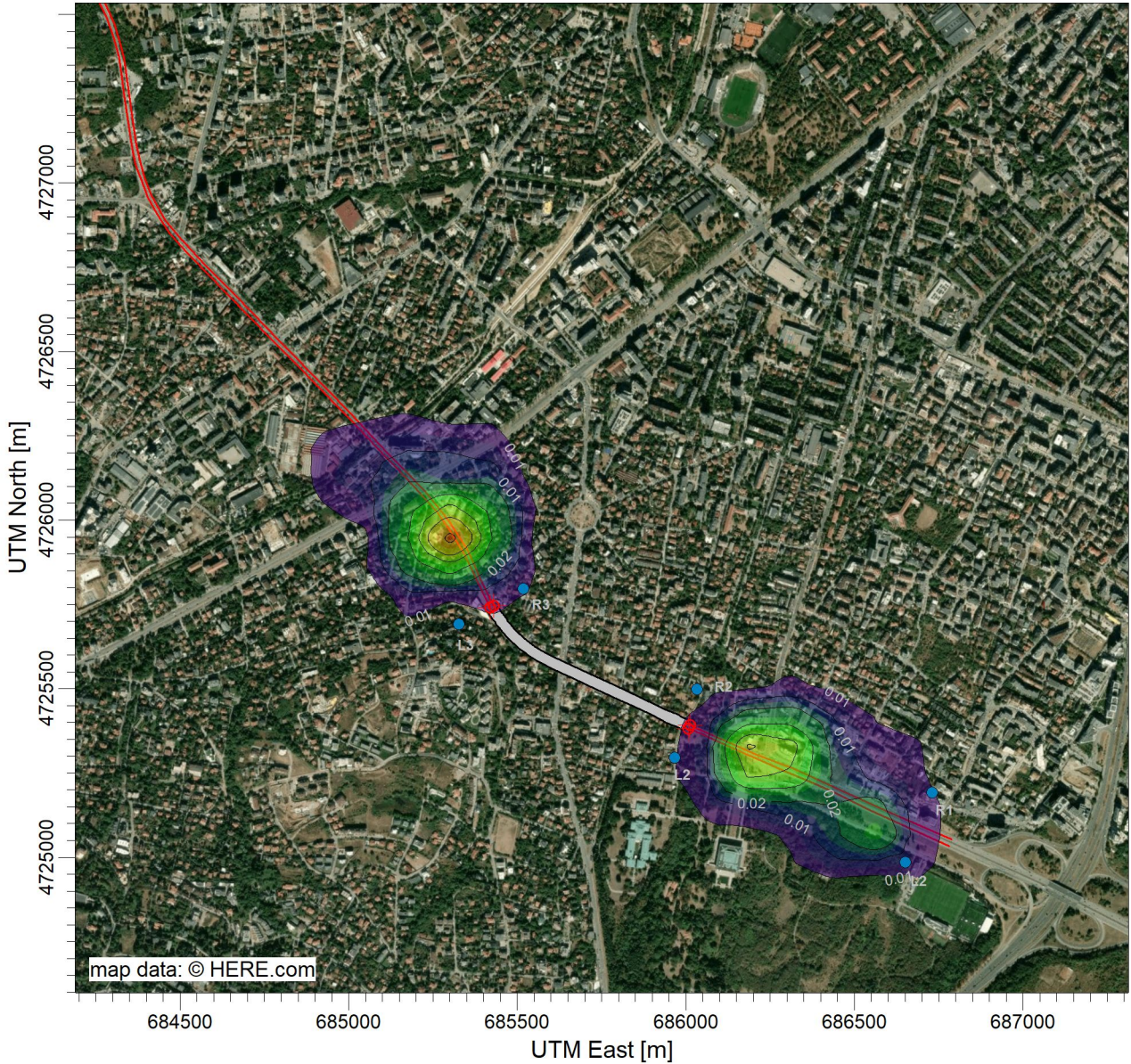
1:20,000

0

0.5 km

PROJECT NO.:

SOP\_Air/EIA\_2026



$\mu\text{g}/\text{m}^3$

0.077

0.070

0.050

0.040

0.030

0.020

0.015

0.010

Max: 0.077 [ $\mu\text{g}/\text{m}^3$ ] at (685306.89, 4725950.30)